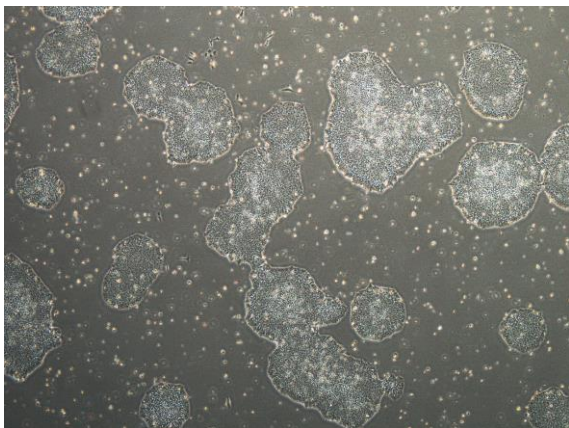
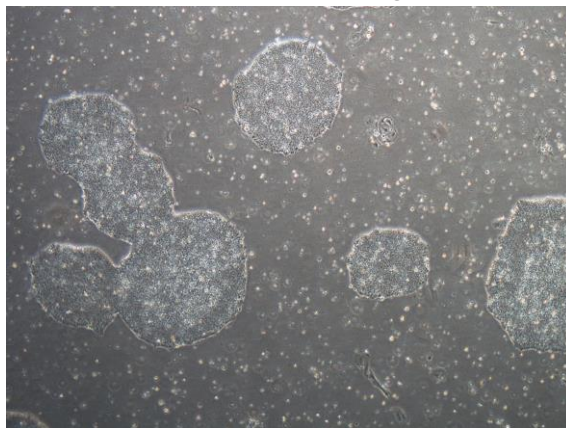


## 【 CiRA-j-1509 】 Morphology of iPSC colonies

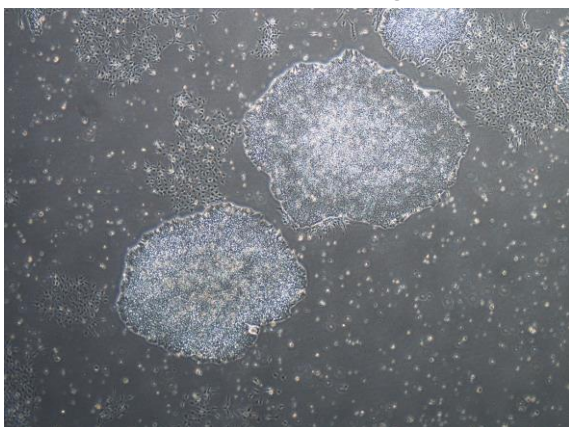
CiRA-j-1509-A: passage-3



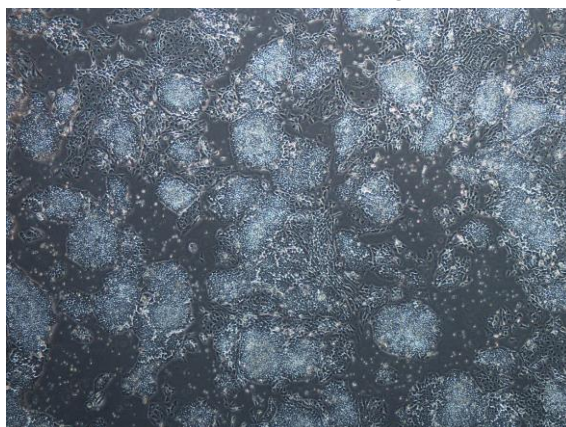
CiRA-j-1509-B: passage-3



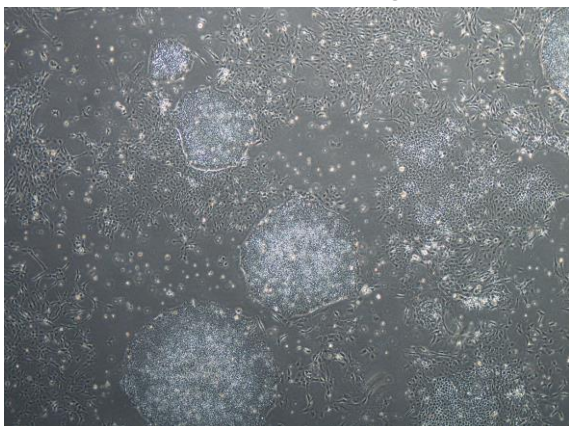
CiRA-j-1509-C: passage-3



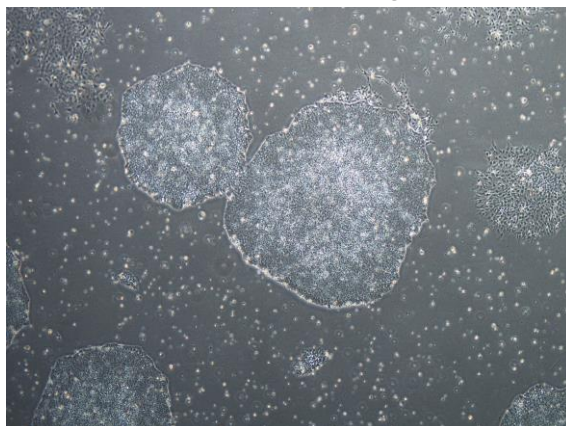
CiRA-j-1509-D: passage-5



CiRA-j-1509-E: passage-4



CiRA-j-1509-F: passage-3



( All images were captured at 4x magnification )